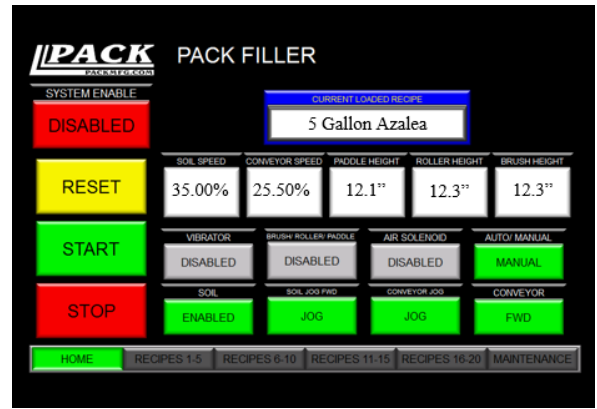




Pack Manufacturing  
 1219 Belmont Dr.  
 McMinnville, TN 37110  
 Office: (931) 473-9980 | Fax: (931) 473-1604



## PACK MANUFACTURING COMPANY PM1100 PACK FILLER®

The Pack Manufacturing PM1100 Pack Filler™ Pot & Tray Filler is the go-to for large volume production. The PM1100 is a highly customizable machine, capable of adapting to many uses. The Pack Manufacturing PM1100 Pack Filler® includes a variable speed soil hopper and filling conveyor and features a fully adjustable sweeper, compact roller and rotary brush. Excess soil is returned to the hopper via the auger soil return system to virtually eliminate wasted grow media. The powered take-off ensures the finished product is quickly unloaded to the next stage of operations. The Pack Filler® is a powerhouse as a stand-alone unit, but in conjunction with an automated system where the machine can run at maximum capacity, your production and cost-per-piece to produce will see an unprecedented improvement. Pack Manufacturing offers plenty of customization options to ensure your machine can meet any need you have, whether special needs are for containers or media.



SPECIFICATIONS	OPTIONS	FEATURES
2 CUBIC YARD HOPPER	BUCKET SOIL RETURN	VARIABLE SPEED FEED & FILL
230 VAC, SINGLE OR 3-PHASE	HEAVY-DUTY CASTERS	ADJUSTABLE ROTARY BRUSH
1-PHASE 36 A, 3-PHASE 18 A	PNEUMATIC BLOW-OFF	ADJUSTABLE SWEEPER
UP TO 1800 FLATS PER HOUR	POWERED COMPACT ROLLER	POWERED TAKE OFF
UP TO 1100 16" POTS PER HOUR	AUTOMATED CONTROLS	AUGER SOIL RETURN

VISIT US ONLINE AT [WWW.PACKMFG.COM](http://WWW.PACKMFG.COM) TO SEE OUR FULL EQUIPMENT LINES

CALL TODAY FOR A FREE CUSTOM QUOTE! 1-931-473-9980

EMAIL US AT SALES@PACKMFG.COM OR SEND US A FAX AT 1-931-473-1604